

# MY STRONGEST SUIT

Music by ELTON JOHN  
Lyrics by TIM RICE

*Quasi recitative*

AMNERIS:

Db (add9)

Bbm



In life one has to face a huge as - sort - ment — Of

*mp*

Gb

Db

Gb/Db

Db

Db/C



nau-se - at - ing fads

and good ad - vice.

There's health and fit - ness, di - et and de -

*poco*

*>*

Bbm

Gb

Ab

F/C



port - ment,

And oth - er point - less forms of sac - ri - fice.

Con - ver - sa - tion? Wit? I am a

Bbm



Bbm/Ab



Gb7



Gb



Ab



doubt-er. —

Man-ners? Charm?

They're no way to im-press. —

So for-

Db



Db/C



Bbm



Bbm/Ab



Gb



Ab



get the in-ner me, —

ob-serve the out - er. —

I am what I wear and how I dress. —

**Moderately**

Db



**Vamp** (last time)

Oh, — now I — be - lieve — in look - ing like my

*p*

Bbm



Gb



time on earth — is cook - ing Wheth-er pol - ka-dot - ted, striped, — or e - ven —

Db

checked With some glam - our guar - an - tee - ing - Ev - 'ry

Bbm

Gb

Cb/Gb Gb

fi - bre of - my be - ing is dis - played to quite re - mark - a - ble - ef - fect -

Db

Gb/Db Db

Fm7

From your cra - dle vi - a trous - seu - to your death -

**PALACE WOMEN:**

Ah

Bbm



Gb



Cb/Gb



Gb



- bed you're on view \_ so nev-er com - pro-mise \_ ac - cept no sub - sti -



Ah Ah

Db/Ab



Ab



Ebm7



tute I would rath - er wear \_ a bar - rel than con -



Ah Ah Ah

Bbm



Gb



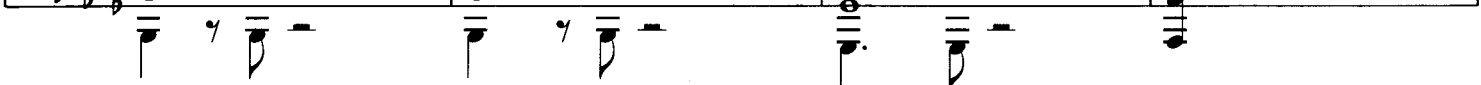
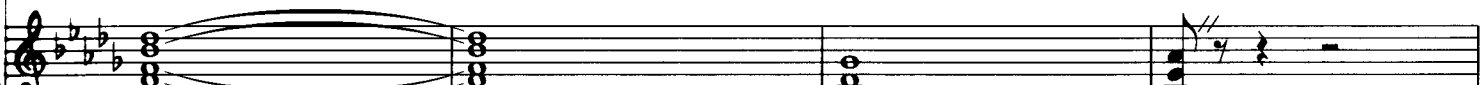
Ab5



serv - a - tive \_ ap - par - el for \_ dress \_ has al - ways been \_ my strong - est



Ah Ah



Solid R&B (♩ = ♩<sup>3</sup>)

Db



Bbm



musical staff with notes and rests, including the word "suit" below the first staff.

musical staff with notes and rests, including the lyrics "O - ver - wear, \_" and "un - der - wear, \_" below the staff.

musical staff with notes and rests, including the dynamic marking "f" below the staff.

Gb



Cb/Gb



Gb



Ab5



musical staff with notes and rests, including the lyrics "Stay - ing in \_" below the staff.

musical staff with notes and rests, including the lyrics "an - y - time, \_" and "an - y - where \_" below the staff.

musical staff with notes and rests, including the dynamic marking "3" below the staff.

Db



Gb/Db



Db



Bbm



musical staff with notes and rests, including the lyrics "or hit - ting town - wards \_" and "From the top \_ and work - ing \_ down -" below the staff.

musical staff with notes and rests, including the lyrics "Oo Oo Oo Ah! \_" and "Oo Oo" below the staff.

musical staff with notes and rests.

G♭
C♭/G♭
G♭
D♭

- wards I en - sure that eve - ry stitch is stitched in — time  
 Oo Ah! — Oo Oo Oo Ah! — Is stitched \_ in time

G♭/D♭
D♭

Wheth - er wig — or hat or — tur - ban Wheth - er clad —  
 Oo Oo Oo Ah! —

B♭m
G♭
C♭/G♭

— bou - doir or ur - ban Not to strut your stuff out -  
 Oo Oo Oo Ah! — Oo Oo

Gb

Db

Fm7

ra-geous - ly's - a crime - And the few who are in - vit -

Oo Ah! - Such - a crime! - Oo

Bbm

- ed To my ward - robe are de - light - ed as they

o - ver - wear, - Oo un - der - wear, -

Gb

Cb/Gb

Gb

Db/Ab 4fr

wan - der through - my - things - to find en - route -

Oo an - y - time, - We're wan - der-ing



That in neg - li - gee — or — for - mal I am an -

through your things — Oo — for - mal for - mal

**SOLO:**

neg - li - gee —



- y - thing — but nor - mal That — dress — has al - ways — been —

Oo — nor - mal nor - mal Ooo — ah!

an - y - thing but nor - mal Ooo — ah!



Db



my strong - est suit

*f* O - ver-wear, un - der-wear, an - y - time, an - y - where

Bbm



Gb



I am what I wear I said an -

O - ver-wear, un - der-wear, an - y - time, an - y - where O - ver-wear, un - der-wear,

Ab



- y - time An - y - where So bring -

an - y - time, an - y - where O - ver-wear, un - der-wear, an - y - time,

Db



Gb/Db



Db



Bbm



me all my fin - est Most au - da - cious my di - vin -

fin - est

Gb



Cb/Gb



Gb



est Most re - veal - ing most ex - pen - sive and to boot -

di - vin - est Most re - veal -

**3 WOMEN:**

Db/Ab



Ab



Ebm



Most ar - rest - ing

ing most ex - pen - sive Most ar - rest - ing Most heart -

Bbm



Ebm



most \_ heart - stop-ping Most free - flow - ing most eye -

Ah

stop-ping

heart - stop-ping

O - ver - wear, -

Fm7



Bbm



Bbm7/Ab



pop-ping

Most ar - rest - ing

most heart - stop-ping yeah

un - der - wear, -

an - y - time, -

an - y - where -

**Straight eighths**

Gb



Ab5



Db7#9



Dress has al - ways been \_ my strong - est suit my strong - est \_

Dress has al - ways been \_

Dress has al - ways been \_

I am what I wear \_

suit \_\_\_\_\_ You know that I am what

I am what I wear \_\_\_\_\_ I am what

Detailed description: This system contains the first two lines of the musical score. The top line is the vocal melody with lyrics. The second line is the piano accompaniment in the right hand, featuring chords and melodic fragments. The third and fourth lines are the piano accompaniment in the left hand, showing a steady eighth-note bass line. The key signature has three flats (B-flat major/D-flat minor).

I wear \_\_\_\_\_ Dress has al - ways been my strong - est suit \_\_\_\_\_

I wear \_\_\_\_\_ Dress has al - ways been my strong - est suit \_\_\_\_\_

Detailed description: This system contains the next two lines of the musical score. It includes the vocal line with lyrics, piano accompaniment in both hands, and guitar chord diagrams. The chords shown are Dbm/Fb (4fr) and Db. The piano accompaniment continues with the same rhythmic pattern as the first system.

N.C.

Detailed description: This system contains the final line of the musical score. It features piano accompaniment in both hands and guitar chord diagrams. The first measure is marked 'N.C.' (No Chords). The subsequent measures show chords Db5 (4fr) and Db13 (3fr). The piano accompaniment in the right hand consists of chords, while the left hand has a melodic line with some notes marked with 'x'.

Bbm



Gb9



Musical notation for the first system, featuring a treble and bass clef with various notes and rests.

Bbm7



Musical notation for the second system, featuring a treble and bass clef with various notes and rests.

Gb7



Musical notation for the third system, featuring a treble and bass clef with various notes and rests.

Gb



Gb5



Eb7#9



Guitar solo

Musical notation for the fourth system, featuring a treble and bass clef with various notes and rests.

Db7#9



Musical notation for the fifth system, featuring a treble and bass clef with various notes and rests.

Funk feel

Db



AMNERIS:

So \_\_\_\_\_ bring \_\_\_\_\_ me all my fin -

PALACE WOMEN:

Oh

Bbm



- est Most au - da - cious my di - vin - est Most re - veal -

my fi - nest

di - vin - est

Gb



Cb/Gb



Gb



Db/Ab



4fr

- ing most ex - pen - sive and to boot \_\_\_\_\_

3 WOMEN:

Most re - veal <sup>3</sup> ing most ex -

Ab



Ebm



Most ar - rest - ing most heart - stop - ping Most free -  
 pens - ive Most ar - rest - ing Ow Most free -

Bbm



Gb



Ab5



flow - ing most \_ eye - pop - ping \_ Dress has al - ways \_ been \_ my strong - est  
 flow - ing most \_ eye - pop - ping Dress has al - ways been \_

Db7#9



suit my strong - est suit \_\_\_\_\_ You know that  
 I am what I wear \_ I am what I wear \_\_\_\_\_

I am what I wear \_\_\_\_\_ Dress has al - ways been

I am what I wear \_\_\_\_\_ Dress has al - ways been

my strong - est my strong - est my strong - est

my strong - est suit \_\_\_\_\_

**Gb**

my strong - est my strong - est my strong - est suit.

my strong - est my strong - est my strong - est suit.

**Db7#9**