

Nickelback - Rockstar

COUPLET

1 G C

5 F G G

11 C F G

Detailed description: This block contains the first three lines of musical notation for the Couplet. The first line (measures 1-4) starts with a treble clef, a key signature of one sharp (F#), and a 7/8 time signature. It features a melodic line with eighth and quarter notes, and a bass line with eighth notes. Chords G and C are indicated above the staff. The second line (measures 5-8) continues the melody and bass line. Chords F, G, and G are indicated. The third line (measures 11-14) shows further development of the melody and bass line. Chords C, F, and G are indicated.

PRECHORUS

16 B^b C

Detailed description: This block contains the musical notation for the Prechorus, measures 16-19. It begins with a double bar line and a repeat sign. The melody and bass line continue. Chords B^b and C are indicated above the staff.

CHORUS

27 G B^b C

27 E^b F G B^b

33 C E^b F B^b C

39 G B^b C G

Detailed description: This block contains the musical notation for the Chorus, measures 27-42. The first line (measures 27-30) features a prominent melody with eighth notes and a bass line with quarter notes. Chords G, B^b, and C are indicated. The second line (measures 31-34) continues the melody and bass line. Chords E^b, F, G, and B^b are indicated. The third line (measures 35-38) shows further development. Chords C, E^b, F, B^b, and C are indicated. The fourth line (measures 39-42) concludes the chorus. Chords G, B^b, C, and G are indicated.

45



54



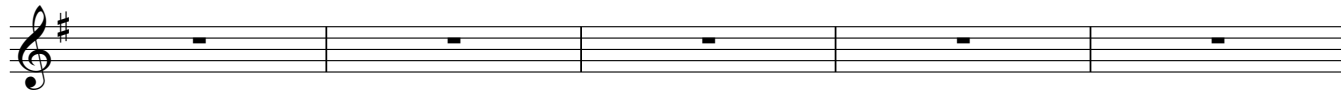
63



72



81



86

