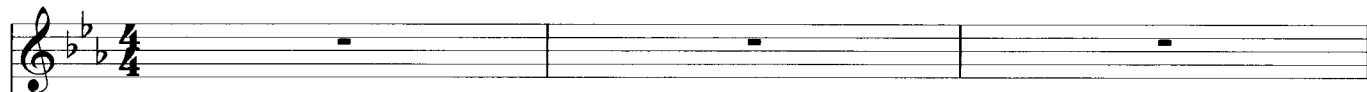


Beautiful

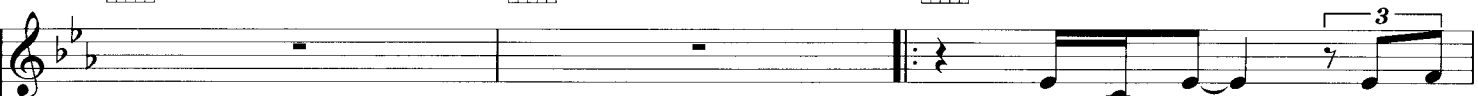
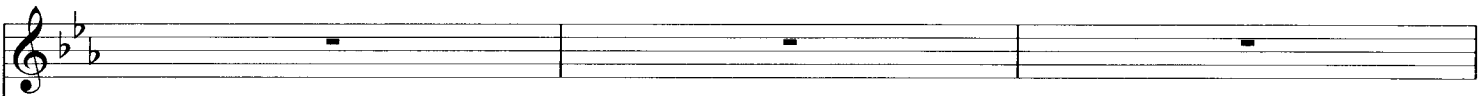
Words & Music by Linda Perry

$\text{♩} = 76$



(Don't look at me)

Vocal ad lib.



1. Ev - 'ry day_ is so
2. To all your friends you're de-



E7 D7

Cm

B

won - der - ful, then sud - den - ly it's hard to breathe.
 - li - ri - ous, so con - sumed in all your doom.

E^b

E^b7/D^b

Cm

Now and then_ I get in - se - cure from all the pain, I'm so a -
 Try - ing hard_ to fill the emp - ti - ness, the piec - es gone, left the puz - zle

B

A^b

-shamed. I am beau - ti - ful, no
 un - done, is that the way it is? 'Cause you are beau - ti - ful, no
 * 'Cause we are beau - ti - ful, no

Fm

E^b

E^b7/D^b

mat - ter what they say. Words can't bring me down.
 mat - ter what they say. Words can't bring you down.
 mat - ter what they say. Yes words won't bring us down.

Cm

A²

Fm

I am beau-ti-ful. in ev-'ry sin-gle way. Yes,
 You are beau-ti-ful. in ev-'ry sin-gle way. Yes,
 We are beau-ti-ful. in ev-'ry sin-gle way. Yes,

E^b
6fr

E^b/D^b
4fr

Cm
3fr

words can't bring me down. Oh, no.
 words can't bring you down. Oh, no.
 words can't bring us down. Oh, no.

Fm⁷

1.
E^b
6fr

To Coda

So don't you bring me down to-day.

E^b/D^b
4fr

Cm
3fr

B

2.

E^b



E^b7/D^b



- day.

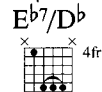
No mat - ter what we do,

no mat - ter what we say,



we're the song in - side the tune,

full of beau - ti - ful mis - takes.



And ev - 'ry - where we go,

the sun will al - ways shine,



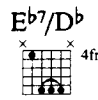
D.S. al Coda

but to - mor - row we might a - wake,

on the oth - er side.

⊕ Coda

E^b
 6fr

E^b7/D^b
 4fr

- day. *Vocal ad lib.*



Cm
 3fr

B


Don't you bring me down_____

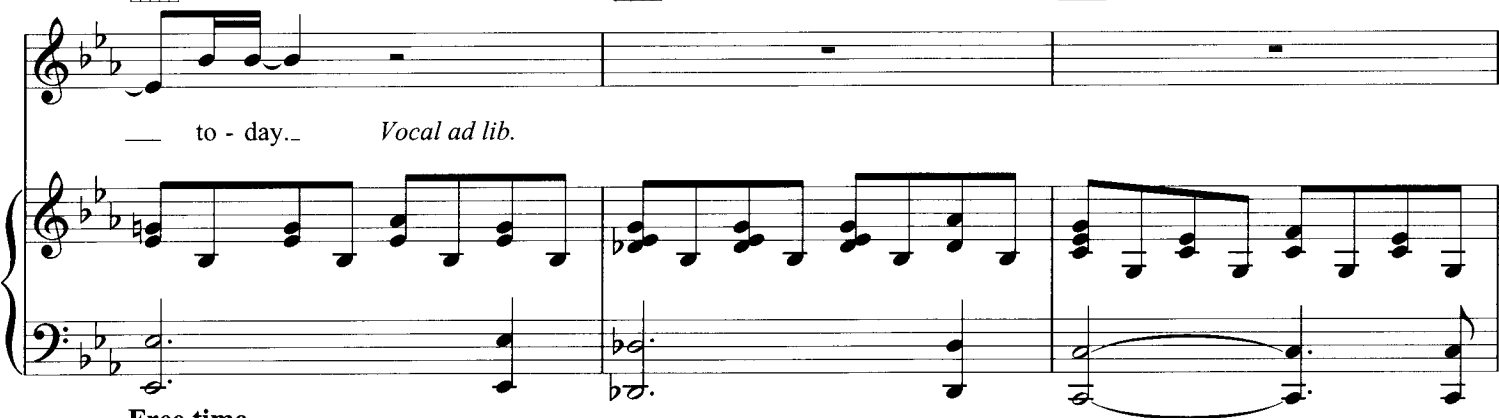


E^b
 6fr

E^b7/D^b
 4fr

Cm
 3fr

to - day... *Vocal ad lib.*



Free time
Bmaj⁷b⁵



E^b
 6fr

Don't you bring me down to - day._____

