

"Californication" - RHCP

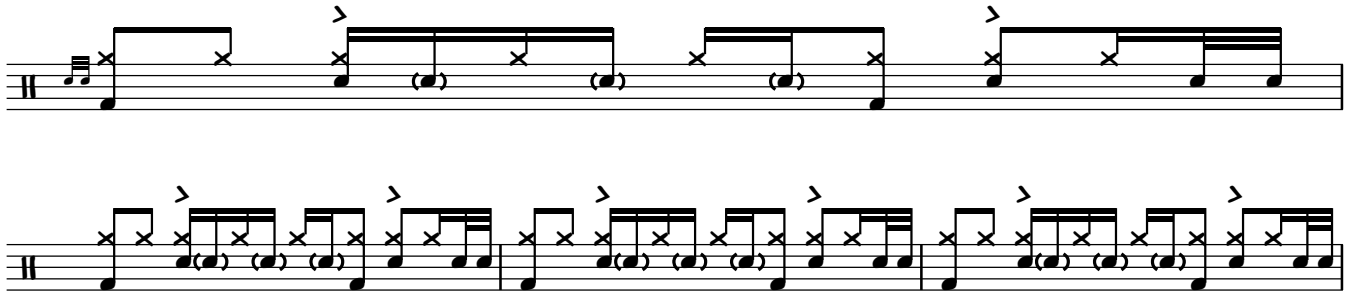
Drum Chart

Verse 1 (Guitar Intro)

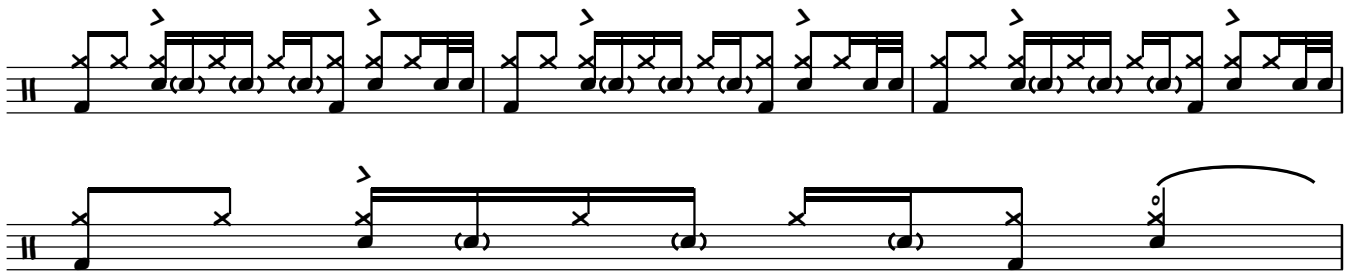


Verse 1 (Drums Enter)

Note: Chad 'steps' eighth notes on the Hi-Hat with his foot throughout every verse creating the washy Hi-Hat sound. You can leave this out if too difficult.



Verse 1 (Vocals Enter)



Verse 1 ("...it's Californication")



Verse 1 (Vocals Re-Enter)



Chorus 1

Note: Chad plays eighth notes on the Hi-Hat with his foot throughout every chorus. You can leave this out if too difficult.

Chorus 1 (Vocals Re-Enter)

Note: Two crashes on the 'a' of beat 4 and the '1' of the next bar.

Chorus 1 ("Dream of Californication")

Musical notation for Chorus 1, consisting of two guitar staves and one bass staff. The guitar parts feature a rhythmic pattern of eighth notes with accents and 'x' marks above them. The bass staff is empty.

Verse 2

Musical notation for Verse 2, consisting of two guitar staves and one bass staff. The guitar parts feature a rhythmic pattern of eighth notes with accents and 'x' marks above them. The bass staff contains a simple bass line.

Verse 2 (Vocals Enter)

Musical notation for Verse 2 (Vocals Enter), consisting of two guitar staves and one bass staff. The guitar parts feature a rhythmic pattern of eighth notes with accents and 'x' marks above them. The bass staff contains a simple bass line.

Verse 2 ("...it's Californication")

Musical notation for Verse 2 ("...it's Californication"), consisting of two guitar staves and one bass staff. The guitar parts feature a rhythmic pattern of eighth notes with accents and 'x' marks above them. The bass staff contains a simple bass line.

Verse 2 (Vocals Re-Enter)

Musical notation for Verse 2 (Vocals Re-Enter), consisting of two guitar staves and one bass staff. The guitar parts feature a rhythmic pattern of eighth notes with accents and 'x' marks above them. The bass staff contains a simple bass line.

Verse 2 ("...it's Californication")

Chorus 2

Chorus 1 (Vocals Re-Enter)

Note: Two crashes on the 'a' of beat 4 and the '1' of the next bar.

Chorus 2 ("Dream of Californication")

Note: Listen out for these notes played on the bell of the ride.

Musical notation for a drum solo section, consisting of four staves of music. The notation includes various rhythmic patterns with accents and 'x' marks indicating specific notes. Two arrows point from the text above to specific notes in the first two staves.

Verse 3 (Guitar Solo)

Musical notation for Verse 3 (Guitar Solo), consisting of two staves of music. The notation includes various rhythmic patterns with accents and 'x' marks indicating specific notes.

Note: Two crashes on the '+' of beat 4 and the '1' of the next bar.

Musical notation for Verse 3 (Guitar Solo), consisting of three staves of music. The notation includes various rhythmic patterns with accents and 'x' marks indicating specific notes. An arrow points from the text above to a specific note in the first staff.

Note: Two crashes on the '+' of beat 4 and the '1' of the next bar.

Drum notation for the first section, consisting of four staves. The first three staves show a rhythmic pattern with accents and 'x' marks. The fourth staff shows a crash on the '+' of beat 4 and the '1' of the next bar, with 'R' and 'R/L' markings above the notes.

Verse 4

Drum notation for Verse 4, consisting of two staves. The first staff shows a rhythmic pattern with accents and 'x' marks. The second staff shows a similar pattern with a crash on the '+' of beat 4 and the '1' of the next bar.

Verse 4 ("...from Californication")

Drum notation for Verse 4 ("...from Californication"), consisting of one staff. The staff shows a rhythmic pattern with accents and 'x' marks, and a crash on the '+' of beat 4 and the '1' of the next bar. Above the notes are markings 'R L R L R L R L'.

Chorus 3

Drum notation for Chorus 3, consisting of two staves. The first staff shows a rhythmic pattern with accents and 'x' marks. The second staff shows a similar pattern with a crash on the '+' of beat 4 and the '1' of the next bar.

Chorus 3 (Vocals Re-Enter)

Drum notation for Chorus 3 (Vocals Re-Enter), consisting of one staff. The staff shows a rhythmic pattern with accents and 'x' marks, and a crash on the '+' of beat 4 and the '1' of the next bar.

Note: Two crashes on the 'a' of beat 4 and the '1' of the next bar. ⁷

Musical notation for the first staff of the drum set part, showing a sequence of eighth notes with accents and a crash on the final note.

Musical notation for the second staff of the drum set part, showing a sequence of eighth notes with accents and a crash on the final note.

Note: Extra accented Snares.

Musical notation for the third staff of the drum set part, showing a sequence of eighth notes with accents and a crash on the final note.

Musical notation for the fourth staff of the drum set part, showing a sequence of eighth notes with accents and a crash on the final note, with "R/L" markings above the notes.

Chorus 3 ("Dream of Californication")

Musical notation for the first staff of Chorus 3, showing a sequence of eighth notes with accents and a crash on the final note.

Musical notation for the second staff of Chorus 3, showing a sequence of eighth notes with accents and a crash on the final note.

Note: Extra accented Snares.

Musical notation for the third staff of Chorus 3, showing a sequence of eighth notes with accents and a crash on the final note.

Musical notation for the fourth staff of Chorus 3, showing a sequence of eighth notes with accents and a crash on the final note.

Musical notation for the fifth staff of Chorus 3, showing a sequence of eighth notes with accents and a crash on the final note.