

Supermassive Black Hole - Live

Live version

Muse

Black Holes and Revelations

Words & Music by Muse

♩ = 117

Intro

Drums

The drum part for the Intro section is written on a single staff in 4/4 time. It begins with a 4-measure rest, followed by a series of eighth notes and sixteenth notes. The notation includes various drum symbols: a cross (x) for snare, a solid circle (o) for bass drum, and a solid circle with a cross (o with x) for hi-hat. The first measure of the drum part is marked with a dynamic of *f* (forte). The Intro section consists of 16 measures in total, with the notation continuing across six lines of music.

1st verse

The drum part for the 1st verse section continues on a single staff in 4/4 time. It maintains the rhythmic pattern established in the Intro, with a mix of eighth and sixteenth notes and various drum symbols. The notation continues across two lines of music, for a total of 8 measures in this section.

Chorus

The Chorus section consists of four staves of guitar tablature. Each staff begins with a treble clef and a key signature of one flat (Bb). The first staff contains the first four measures, with a circled 'x' above the first fret of the first string in the first measure. The second staff contains measures 5-8, with circled 'x' marks above the first fret of the first string in measures 5, 6, and 7. The third staff contains measures 9-12, with circled 'x' marks above the first fret of the first string in measures 9, 10, and 11. The fourth staff contains measures 13-16, with circled 'x' marks above the first fret of the first string in measures 13, 14, and 15. The notation includes eighth and quarter notes, often beamed together, and rests. The strings are numbered 1-6 from top to bottom.

2nd verse

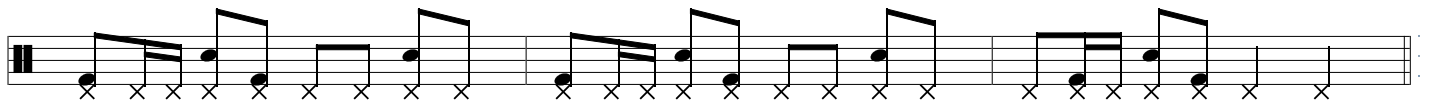
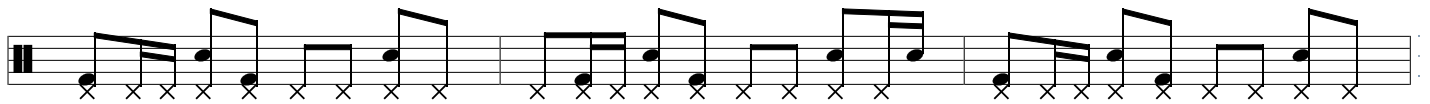
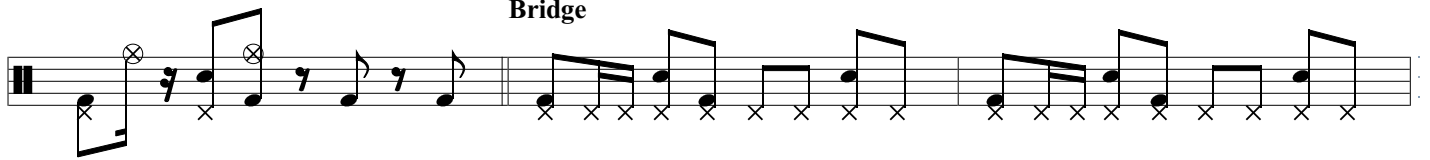
The 2nd verse section consists of two staves of guitar tablature. Each staff begins with a treble clef and a key signature of one flat (Bb). The first staff contains measures 17-20, and the second staff contains measures 21-24. The notation includes eighth and quarter notes, often beamed together, and rests. The strings are numbered 1-6 from top to bottom.

Chorus

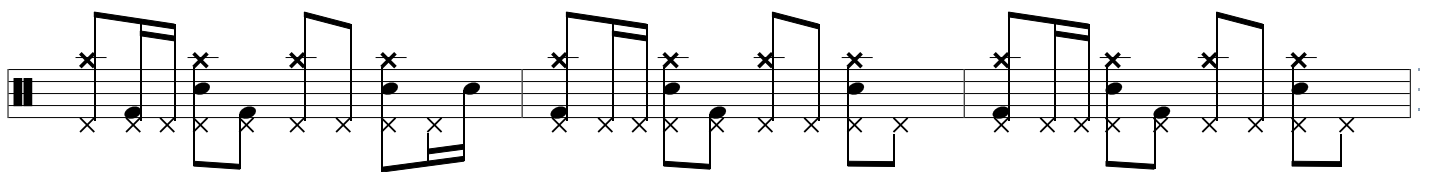
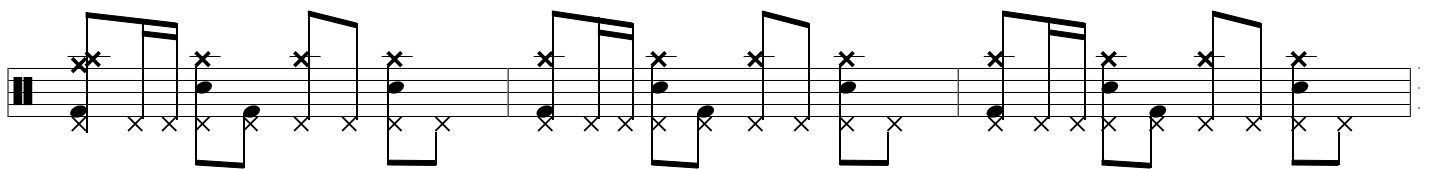
The second Chorus section consists of two staves of guitar tablature. Each staff begins with a treble clef and a key signature of one flat (Bb). The first staff contains measures 25-28, with a circled 'x' above the first fret of the first string in the second measure. The second staff contains measures 29-32, with circled 'x' marks above the first fret of the first string in measures 29, 30, and 31. The notation includes eighth and quarter notes, often beamed together, and rests. The strings are numbered 1-6 from top to bottom.



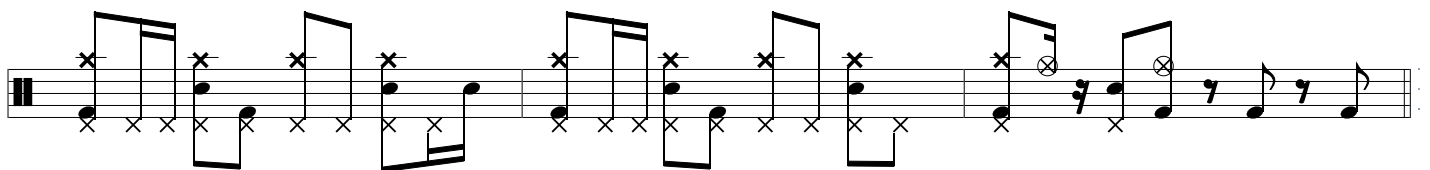
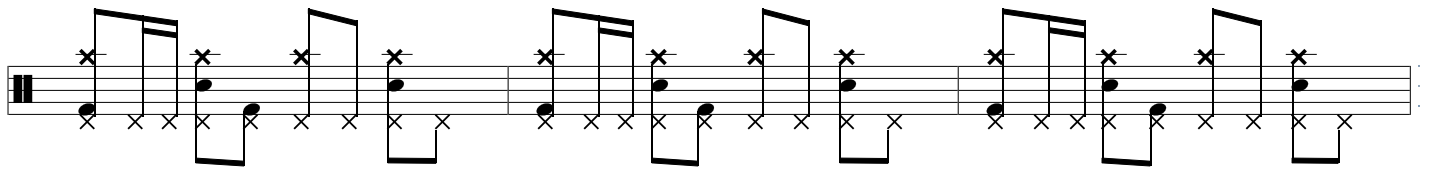
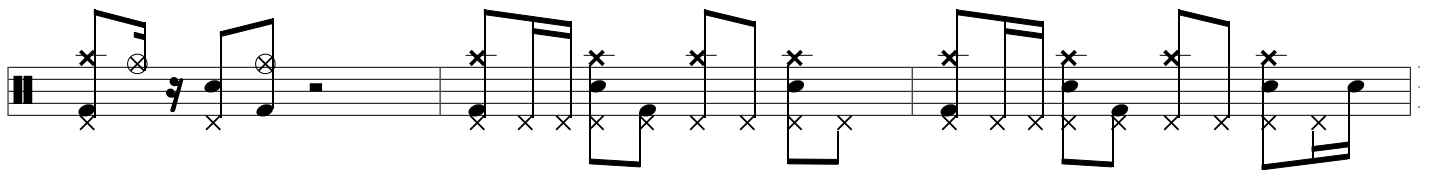
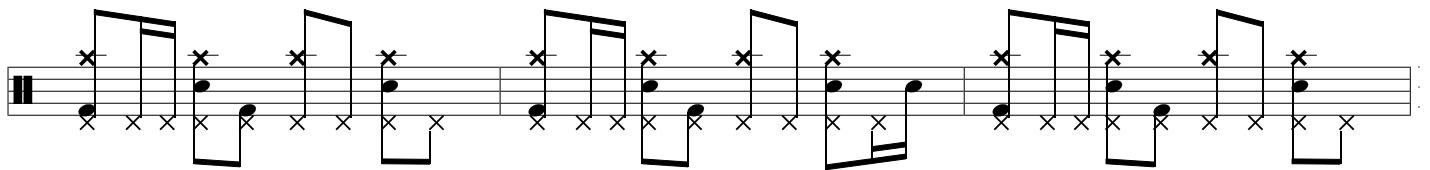
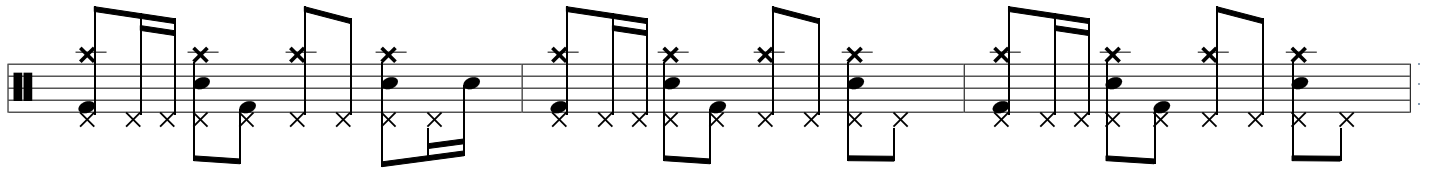
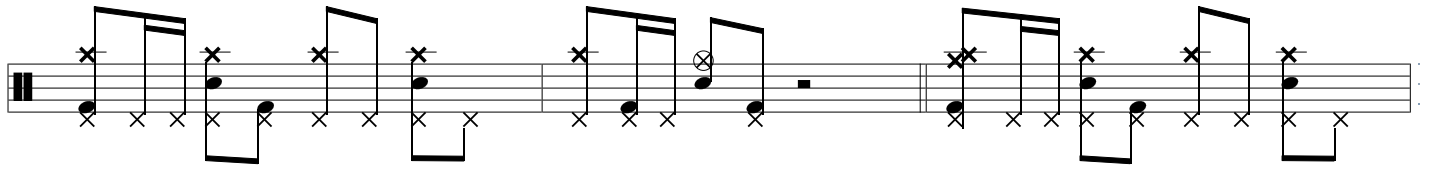
Bridge



Solo



Chorus



Outro

