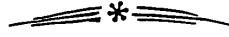


ROSSINI VOCALISES.



EDITED BY E. SEILER.

1.

2.

3.

4.

5.

Exercise 5 consists of four staves of music. The first staff begins with a treble clef and a key signature of one sharp (F#). The music is written in a single melodic line, featuring a sequence of eighth and sixteenth notes with various accidentals (sharps and naturals). The second and third staves continue this melodic line, showing a steady progression of notes. The fourth staff concludes the exercise with a double bar line.

6.

Exercise 6 consists of four staves of music. The first staff begins with a treble clef and a key signature of one sharp (F#). The music is written in a single melodic line, featuring a sequence of eighth and sixteenth notes with various accidentals (sharps and naturals). The second and third staves continue this melodic line, showing a steady progression of notes. The fourth staff concludes the exercise with a double bar line.

7.

Exercise 7 consists of four staves of music. The first staff begins with a treble clef and a key signature of one sharp (F#). The music is written in a single melodic line, featuring a sequence of eighth and sixteenth notes with various accidentals (sharps and naturals). The second and third staves continue this melodic line, showing a steady progression of notes. The fourth staff concludes the exercise with a double bar line.



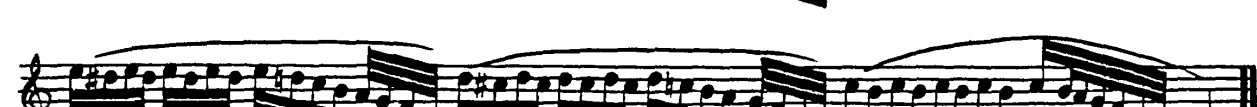
8.



9.



10.



11.




Musical notation for exercise 11, first system. It consists of a single staff with a treble clef, starting with a C-clef. The melody is a sequence of eighth and sixteenth notes, including some triplets. The key signature has one flat (B-flat).




Musical notation for exercise 11, second system. It continues the melody from the first system. The final measure features a trill, indicated by the 'tr' symbol above the note.


12.



Musical notation for exercise 12, first system. It consists of two staves with a treble clef. The upper staff contains a complex melodic line with many slurs and ties. The lower staff contains a rhythmic accompaniment of eighth notes.



Musical notation for exercise 12, second system. Continuation of the two-staff piece.



Musical notation for exercise 12, third system. Continuation of the two-staff piece.

13.




Musical notation for exercise 13, first system. It consists of a single staff with a treble clef. The melody features many slurs and ties, with some notes marked with accents.




Musical notation for exercise 13, second system. Continuation of the single-staff piece.


14.



Musical notation for exercise 14, first system. It consists of a single staff with a treble clef. The melody is a sequence of eighth and sixteenth notes, with many slurs and ties.



Musical notation for exercise 14, second system. Continuation of the single-staff piece.



Musical notation for exercise 14, third system. Continuation of the single-staff piece.

