

West

Scott Alan

Relaxed (♩ = ca. 90 - 96)

Piano

The piano introduction consists of three measures in 4/4 time. The key signature has two sharps (F# and C#). The first measure features a D major triad (D, F#, A) with a fermata over the D. The second measure features a D7sus chord (D, F#, A, C) with a fermata over the D. The third measure features a D major triad (D, F#, A) with a fermata over the D. The right hand plays a rhythmic pattern of quarter notes: D, F#, A, C, D, F#, A, C, D, F#, A, C, D, F#, A, C.

4

Measures 4 and 5. The vocal line begins in measure 4 with a quarter rest, followed by the lyrics "Win - ter here — is com - ing the". The piano accompaniment in measure 4 features a D7sus chord (D, F#, A, C) with a fermata over the D. In measure 5, the piano accompaniment features a D major triad (D, F#, A) with a fermata over the D.

6

Measures 6, 7, and 8. The vocal line continues with the lyrics "leaves are al-most gone — You can hear the birds — mi - gra - ting through the". The piano accompaniment in measure 6 features a D7sus chord (D, F#, A, C) with a fermata over the D. In measure 7, it features a G/D chord (G, B, D, F#) with a fermata over the G. In measure 8, it features a D major triad (D, F#, A) with a fermata over the D.

2
8

West

sky - lit au - tumn dawn — the col - ors here — are chang - ing

D7 sus G/D D

This system contains the first two measures of the song. The vocal line starts with a treble clef and a key signature of two sharps (D major). The lyrics are "sky - lit au - tumn dawn — the col - ors here — are chang - ing". The piano accompaniment is in a grand staff with treble and bass clefs. Chords are indicated as D7 sus, G/D, and D.

10

There's no green in sight And the snow has made it's en - trance so the

D7 sus D

This system contains measures 3 and 4. The vocal line continues with the lyrics "There's no green in sight And the snow has made it's en - trance so the". The piano accompaniment continues with chords D7 sus and D.

12

ground is paved in white. I'm sure you're do - ing great — out west — and you're

D7 sus D B m7

This system contains measures 5 and 6. The vocal line continues with the lyrics "ground is paved in white. I'm sure you're do - ing great — out west — and you're". The piano accompaniment continues with chords D7 sus, D, and B m7.

14

fine out on your own But know the front door key still works if you

The vocal line for measures 14 and 15 consists of a melody in G major. Measure 14 starts with a quarter note G4, followed by eighth notes A4, B4, and C5. Measure 15 starts with a quarter note D5, followed by eighth notes C5, B4, and A4. The lyrics are: "fine out on your own But know the front door key still works if you".

14

G(add2)

B9

The piano accompaniment for measures 14 and 15. Measure 14 features a G(add2) chord in the right hand and a G2 bass note in the left hand. Measure 15 features a B9 chord in the right hand and a B2 bass note in the left hand.

16

choose to come back home.

The vocal line for measures 16 and 17. Measure 16 starts with a quarter note G4, followed by eighth notes A4, B4, and C5. Measure 17 starts with a quarter note D5, followed by eighth notes C5, B4, and A4. The lyrics are: "choose to come back home."

16

C GM7 A7 sus

D

D7 sus

C

G

The piano accompaniment for measures 16 and 17. Measure 16 features chords C, GM7, and A7 sus in the right hand, and a G2 bass note in the left hand. Measure 17 features chords D, D7 sus, C, and G in the right hand, and a D2 bass note in the left hand.

19

Have you

The vocal line for measures 19 and 20. Measure 19 starts with a quarter note G4, followed by eighth notes A4, B4, and C5. Measure 20 starts with a quarter note D5, followed by eighth notes C5, B4, and A4. The lyrics are: "Have you".

19

D

D7 sus

C

G

The piano accompaniment for measures 19 and 20. Measure 19 features a D chord in the right hand and a D2 bass note in the left hand. Measure 20 features chords D7 sus, C, and G in the right hand, and a D2 bass note in the left hand.

4
21

West

made a lot of friends — there in this new life — that you made? Are there

D D7 sus G

This system contains measures 21 and 22. The vocal line is in treble clef with a key signature of two sharps (F# and C#). The lyrics are: "made a lot of friends — there in this new life — that you made? Are there". The piano accompaniment is in grand staff. The right hand has a treble clef and plays chords and moving lines. The left hand has a bass clef and plays a steady eighth-note accompaniment. Chord symbols D, D7 sus, and G are placed above the piano staff.

23

days that you think may-be — you should pos - sib-ly — have stayed? — I'm

D D7 sus D

This system contains measures 23 and 24. The vocal line continues with the lyrics: "days that you think may-be — you should pos - sib-ly — have stayed? — I'm". The piano accompaniment continues with the same rhythmic pattern. Chord symbols D, D7 sus, and D are placed above the piano staff.

25

sure you're hap - py where you are and you do not — miss the cold, but re-

B 9 G

This system contains measures 25 and 26. The vocal line continues with the lyrics: "sure you're hap - py where you are and you do not — miss the cold, but re-". The piano accompaniment continues with the same rhythmic pattern. Chord symbols B 9 and G are placed above the piano staff.

27

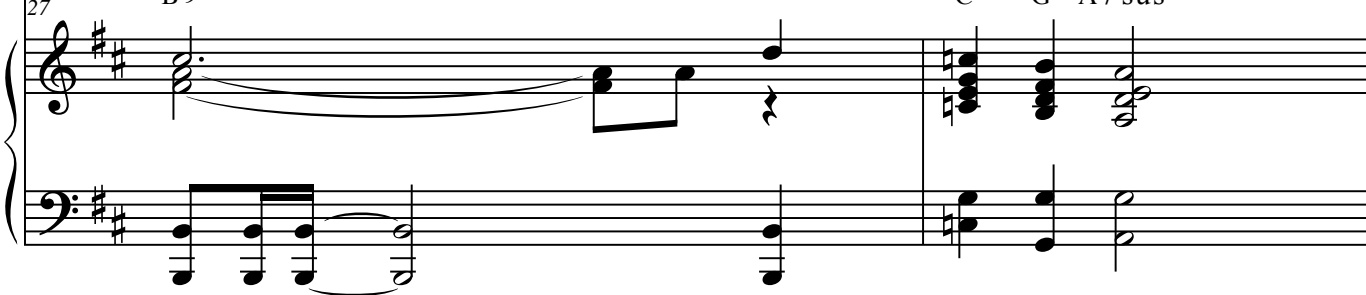


mem - ber where — the spare — key sits if you want to come back home. —

27

B9

C G A7sus



29

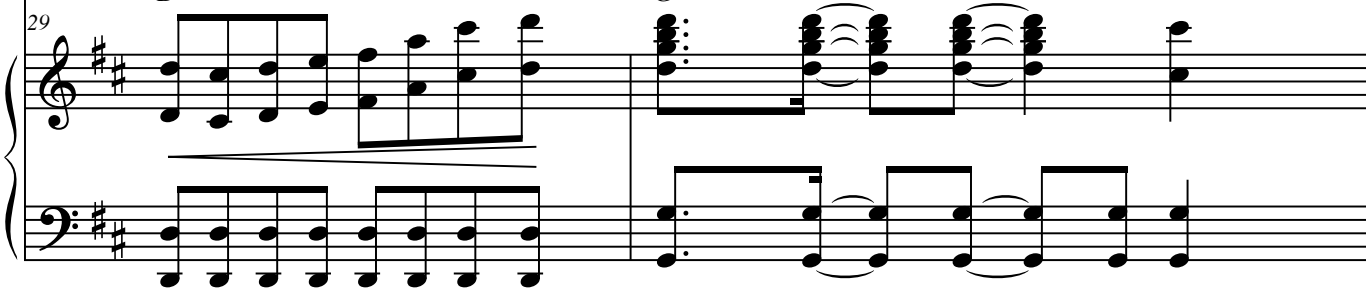


— There'll be sec-onds, some - times min-utes where your

29

D

G



31

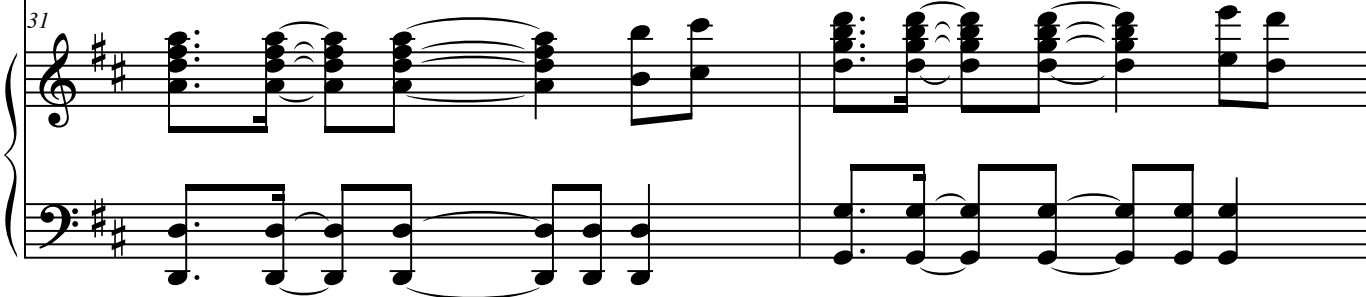


face won't cross my mind, — there'll be days that I'm not an - gry that you

31

D

G



6

West

33

Vocal line for measures 33-34. The melody starts with a quarter note G4, followed by quarter notes A4, B4, C5, and a quarter rest. The second measure begins with a quarter note G4, followed by quarter notes F4, E4, D4, and a quarter rest. A triplet of eighth notes (G4, A4, B4) is marked with a '3' above it.

left me here be - hind _____ And I know you've _____ gone to find your-self It does-n't

33

D

C

Piano accompaniment for measures 33-34. The right hand features chords and moving lines, with a D chord in measure 33 and a C chord in measure 34. The left hand provides a steady bass line with quarter notes.

35

Vocal line for measures 35-36. The melody continues with quarter notes G4, A4, B4, C5, and a quarter rest. The second measure begins with a quarter note G4, followed by quarter notes F4, E4, D4, and a quarter rest.

make the pain _____ hurt _____ less. When I'm here _____ all a-lone _____ I won - der

35

D

C/E

Piano accompaniment for measures 35-36. The right hand features chords and moving lines, with a D chord in measure 35 and a C/E chord in measure 36. The left hand provides a steady bass line with quarter notes.

37

Vocal line for measures 37-38. The melody starts with a quarter rest, followed by quarter notes G4, A4, B4, and a quarter rest. The second measure begins with a quarter note G4, followed by quarter notes F4, E4, D4, and a quarter rest.

how I'd fare out west. _____ Oh I'd

37

D/F#

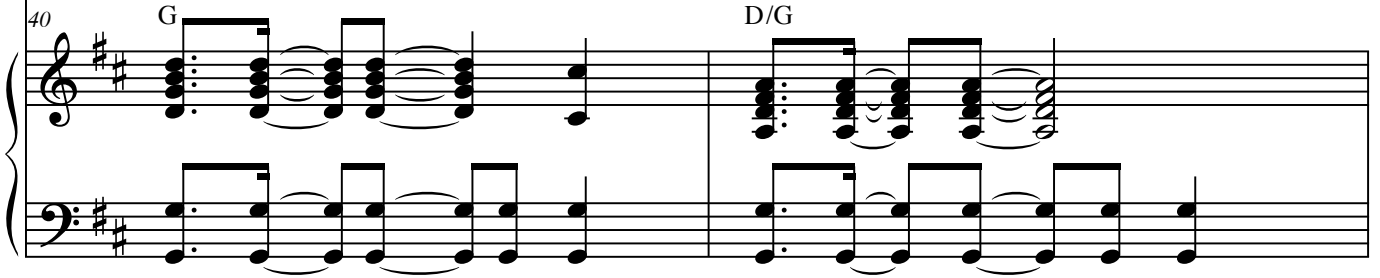
A7 sus

Piano accompaniment for measures 37-38. The right hand features chords and moving lines, with a D/F# chord in measure 37 and an A7 sus chord in measure 38. The left hand provides a steady bass line with quarter notes.

40



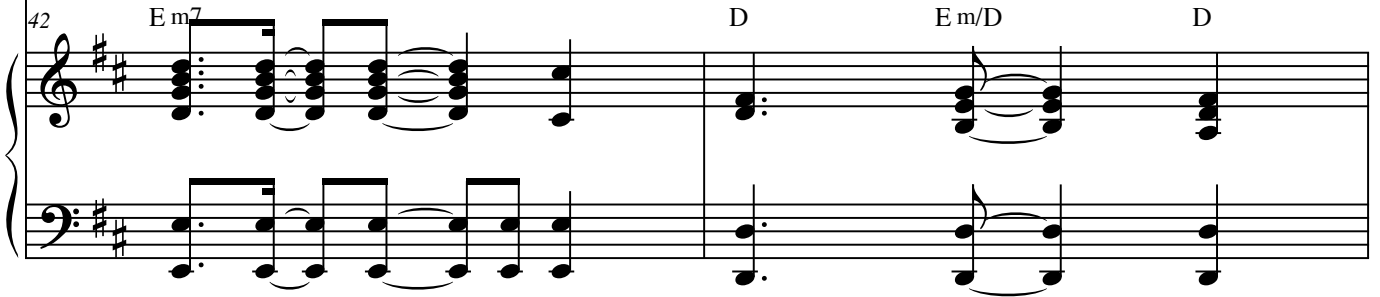
sail u-pon my feet and the sounds of the pa - ci - fic o - cean, I'd be



42



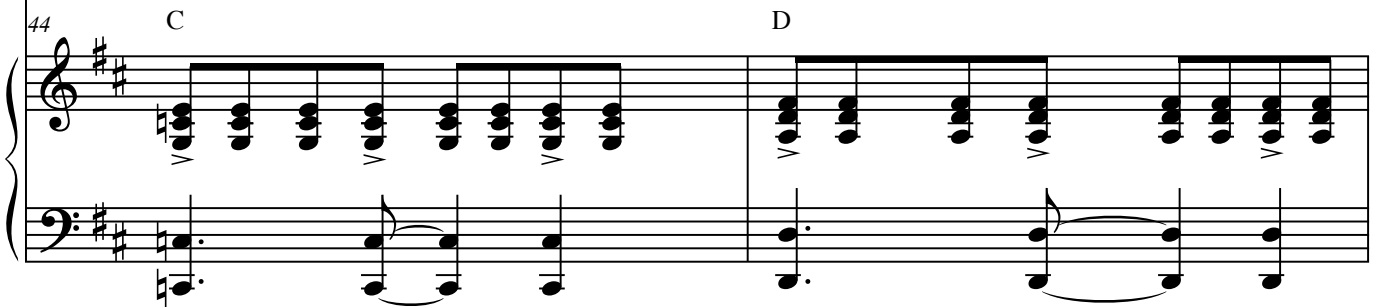
bask - ing in the heat with my face lath-ered in sun - tan lo - tion, and



44



all the stars I'd see While they're driv - ing on gold streets No



8
46

West

none of that ___ com - petes with liv - ing here ___ out east ___ Cause

46 C/E D/F#

Detailed description: This block contains the musical notation for measures 46 and 47. The top staff is a vocal line in treble clef with a key signature of two sharps (F# and C#). The lyrics are "none of that ___ com - petes with liv - ing here ___ out east ___ Cause". The bottom staff is a piano accompaniment in treble and bass clefs. Measure 46 features a C/E chord in the right hand and a bass line with notes G, F#, and E. Measure 47 features a D/F# chord in the right hand and a bass line with notes D, C#, and B.

48

though I miss you and God, do ___ I miss you ___ a

48 C D

Detailed description: This block contains the musical notation for measures 48 and 49. The top staff is a vocal line in treble clef with a key signature of two sharps. The lyrics are "though I miss you and God, do ___ I miss you ___ a". The bottom staff is a piano accompaniment in treble and bass clefs. Measure 48 features a C chord in the right hand and a bass line with notes C, B, and A. Measure 49 features a D chord in the right hand and a bass line with notes D, C#, and B.

50

life out there ___ would make me feel ___

50 C/E D D7 sus

Detailed description: This block contains the musical notation for measures 50 and 51. The top staff is a vocal line in treble clef with a key signature of two sharps. The lyrics are "life out there ___ would make me feel ___". The bottom staff is a piano accompaniment in treble and bass clefs. Measure 50 features a C/E chord in the right hand and a bass line with notes C, B, and A. Measure 51 features a D chord in the right hand and a bass line with notes D, C#, and B. The notation for measure 51 includes a "D7 sus" label and a fermata over the final chord.

52

in - com - plete.

52

D D7 sus

54

Cause I'd

54

D D7 sus

56

miss the change in sea - sons and the smell of fi - re wood and though

56

D D7 sus

I'll be out to vis - it New York's my home for good I'm

58 D D7 sus

sure you're hap-py where ___ you are ___ and you're fine out on your own ___ Just

60 B m7 G

know I'm here with o - pen arms if you find your-self back

63 B m7 C GM7 A7 sus D

66

home. _____

66 D7 sus D D7 sus D

rit.