

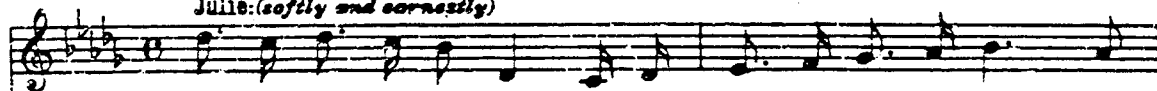
# What's the use of wond'rin'

No. 21

Assai moderato

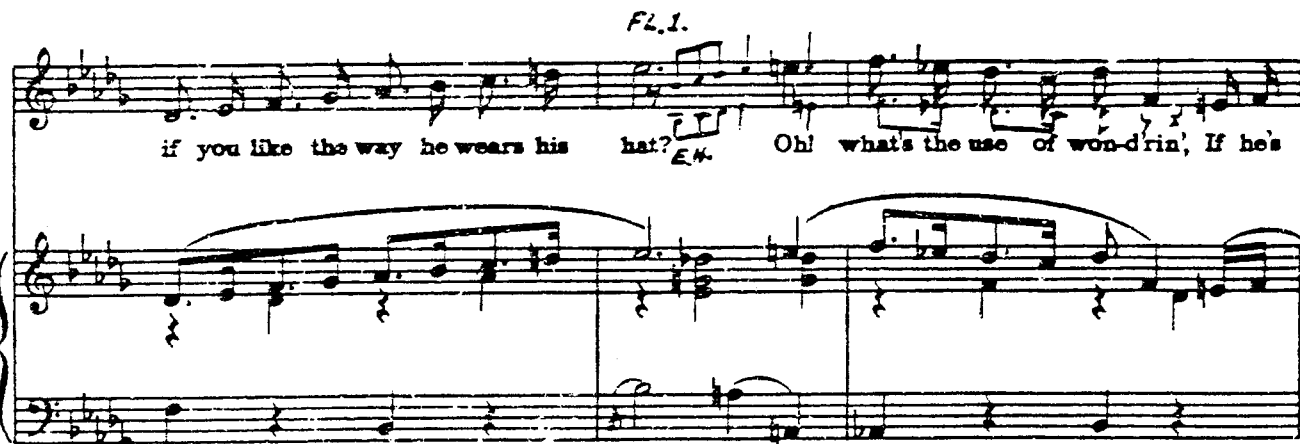
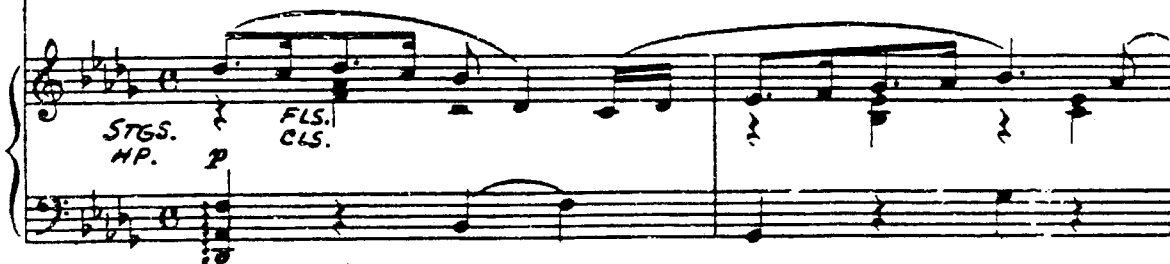
Julie: (softly and earnestly)

Voice



What's the use of won-d'rin if he's good or if he's bad, Or

Piano



if you like the way he wears his hat? Oh! what's the use of won-d'rin', If he's



good or if he's bad? He's your fel-ler and you love him. That's all there is to

that. \_\_\_\_\_ Com-mon sense may tell you, That the

*mf* *EN.* *p*

*BN.*

end - in' will be sad, And now's the time to break and run a -

*Fl. I.*  
*EN. 7*  
way. But what's the use of won-drin' if the end - in' will be sad? He's your

fel - ler and you love him - *EN.* There's noth-in more to say. \_\_\_\_\_

*mf*

*VLNS.*

Some-thin' made him the way that he is, —

*CLS.*  
*mp*

Detailed description: This system contains the first two staves of music. The top staff is a vocal line in treble clef with a key signature of two flats and a 4/4 time signature. It begins with a rest followed by the lyrics "Some-thin' made him the way that he is, —". The bottom staff is a piano accompaniment in grand staff (treble and bass clefs). It features a melodic line in the right hand and a bass line in the left hand. A dynamic marking of *mp* is present. A *CLS.* marking is placed above the piano part. A triplet of eighth notes is marked with a '3' above it.

Wheth-er he's false\_ or true And some-thin' gave him the

*mp*

Detailed description: This system contains the third and fourth staves of music. The vocal line continues with the lyrics "Wheth-er he's false\_ or true And some-thin' gave him the". The piano accompaniment continues with a melodic line and bass line. A dynamic marking of *mp* is present. A triplet of eighth notes is marked with a '3' above it.

things that are his — One of those things is you. So

*CLS.*

Detailed description: This system contains the fifth and sixth staves of music. The vocal line continues with the lyrics "things that are his — One of those things is you. So". The piano accompaniment continues with a melodic line and bass line. A dynamic marking of *mp* is present. A *CLS.* marking is placed above the piano part. A triplet of eighth notes is marked with a '3' above it.

29

when he wants your kiss - es you will give them to the lad, And

*p*  
*BN.*

Detailed description: This system contains the seventh and eighth staves of music. The vocal line continues with the lyrics "when he wants your kiss - es you will give them to the lad, And". The piano accompaniment continues with a melodic line and bass line. A dynamic marking of *p* is present. A *BN.* marking is placed above the piano part. A triplet of eighth notes is marked with a '3' above it.

*VLNS.* *f FLS.*

an - y - where he leads you, you will *HMS.* walk and an - y - time he needs you, you'll go

run - nin' there like mad! You're his girl and he's your fel - ler

And all the rest is "talk!"

*CLS.*

**39** *(Billy and Jigger enter)*

<i>Julie: (speaks)</i>	<b>Billy:</b>	<b>Jigger:</b>	<b>Julie:</b>
Billy! where you goin'?	Where we goin'?	We're lookin' for the treasure.	I don't want you to, Billy Let me come with you.

*VLA.* *CLS.* *VLNS.* *E.H.* *BN. <sup>mp</sup>*

(Julie feels knife inside Billy's vest)

Jigger:

Nol

Julie:

Billy!

Billy:

I got no time to fool with women.

Julie:

Let me have that! Oh Billy please.

Musical score for the first system, featuring vocal lines and piano accompaniment. The piano part includes markings for *CLS.*, *VLNS.*, and *BH. mp*. The vocal lines are for Jigger, Julie, Billy, and Julie.

47

*VLNS.*  
All Girls: (stags)

Com - mon sense may tell you that the end - in' will be sad And

Musical score for the second system, featuring piano accompaniment. The piano part includes markings for *mf*, *FLS.*, *CLS.*, and *BH. p*.

*STGS.*

+ *FLS.*

now's the time to break and run a - way, But what's the use of won-drin' if the

Musical score for the third system, featuring piano accompaniment. The piano part includes markings for *EH.*, *CLS.*, and *BH. p*. There are also handwritten markings like *NAS.* and *(E.H.)*.

end - in' will be sad? He's your fel - ler and you love him

Musical score for the fourth system, featuring piano accompaniment.

There's noth - in' more to say. *Curtain*

*STGS.*

*HP.*

*E.H.*

*BN.*

*+ CLARS.*

*pp*

## Change of Scene

(Act II Scene 2)

No. 22

*TUTTI* *Andante (broadly)*

Piano

*TDS.*

*TIMP.*

4

*Curtain*

*STGS. (TREM.)*

*pp*

*TRB. pp*

*HNS.*

*E.H.*

*(TIMP.)*

*(TIMP.)*

*(repeat until Dialogue begins)*