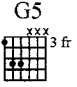
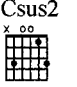



HOME

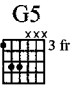
Words and Music by
CHRIS DAUGHTRY

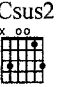
Moderately


G5  3 fr

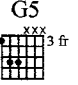
Csus2 

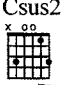



G5  3 fr

Csus2 



G5  3 fr

Csus2 



G5  3 fr

Csus2 



*Recorded a half-step lower

G5



Csus2



I'm go - in' to the place where love and

Em7



D



Csus2



feel - in' good_ don't ev - er cost_ a thing and the

Em7



D



Csus2



pain you feel's_ a dif - f'rent kind_ of pain.

♩

G5



D5



Csus2



D5



Well, } I'm go in' home, back to the place where I be long and where your
So, }

Em7



D5



Csus2



love has al - ways been e - nough for me.



G5



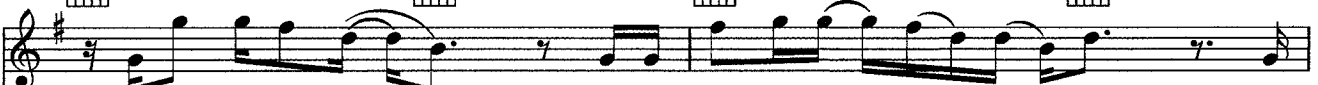
D5



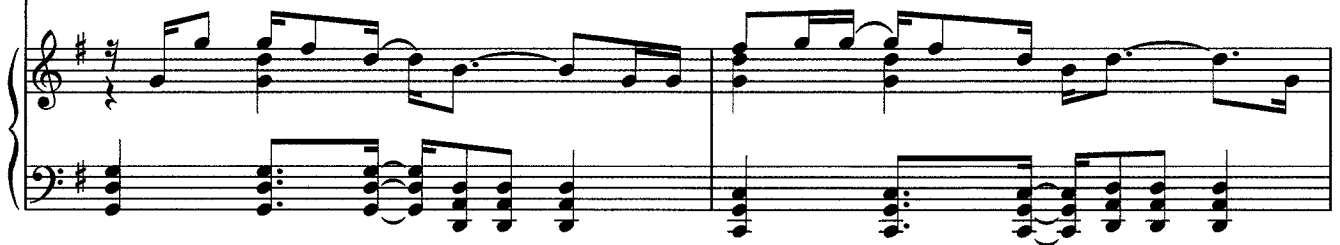
Csus2



D5



I'm not run-nin' from, no, I think you got me all wrong. I



Em7



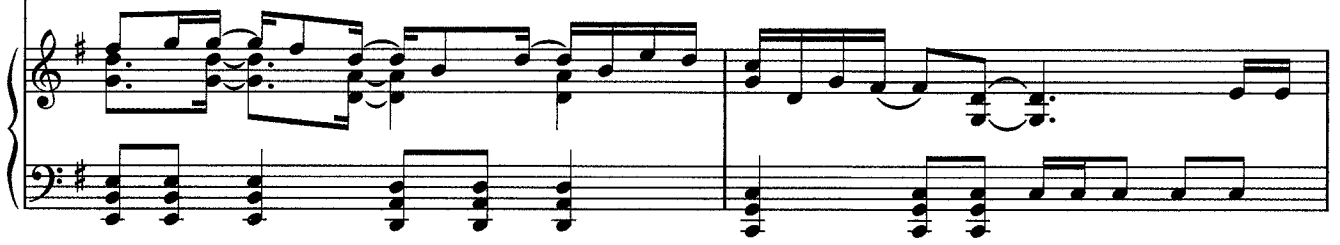
D5



Csus2



don't re - gret this life I chose for me. But these



Em7



D5



Csus2



To Coda



plac - es and these fac - es are get - ting old, so I'm go - in' home.



G5



Csus2



Well, I'm go - in' home.

G5



Csus2



G5



Csus2



The miles are get - ting long - er, it seems,

G5



Csus2



the clos - er I get to you.

G5

Csus2

I've not al-ways been _ the best man _ or friend _ for you _ but your love _ re - mains _ true _____

Em7

D

Csus2

_____ and I _____ don't _ know _____ why. You

Em7

D

Csus2

al-ways seem _ to give _ me an-oth - er _____ try. _

D.S. % al Coda

Coda

C5

D

_____ old. _____ Be care - ful what _ you wish

C5

Em9

D5

for _____ 'cause you just might get it all. _____ You just might get it all _____

Csus2

D

_____ and then some you don't want. _____ Be care - ful what _ you wish

C5

Em9

D5

for _____ 'cause you just might get it all. _____ You just might get it all, _____

Csus2

Em

D

C5

_____ yeah.

Em

D

C5

G5

D5



Oh _____ well, I'm go - in' home, _____ back to the

Csus2

D5

Em7

D5



place where I _____ be - long _____ and where your love has al - ways been _____ e - nough _____ for me. _____

Csus2

G5

D5



_____ I'm not run - nin' from, _____ no, I

Csus2

D5

Em7

D5



think you got _____ me all _____ wrong. _____ I don't re - gret _____ this life _____ I chose _____ for me. _____

Csus2



Em7



D5



But these plac - es and these fac - es are get - ting

Csus2



Em7



D5



old.

I said, these plac - es and these fac - es are get - ting

Csus2



Em



D



Csus2



old

so I'm go - in' home.

Em



D



Csus2



G5



I'm go - in' home.