

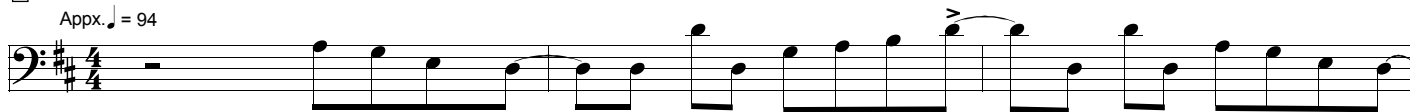
Ain't Nobody Home

Bass Line originally played by Chuck Rainey or Jerry Jemmott or Jimmy Tyrell ?
Transcription by Pierre Verger, 2006
For an easier study, my advice to you is to buy the original recording

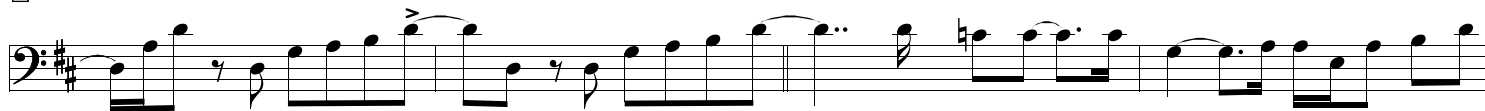
As recorded by Howard Tate, 1966
Composer : Jerry Ragovoy
From the Verve recorded single # VK 10420

1

Appx. ♩ = 94



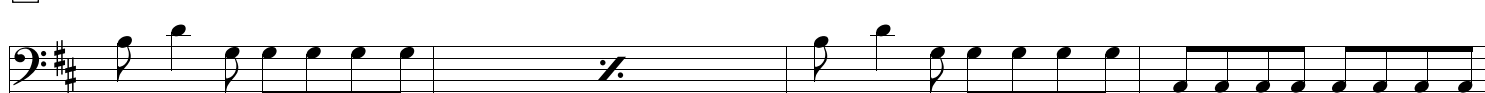
4



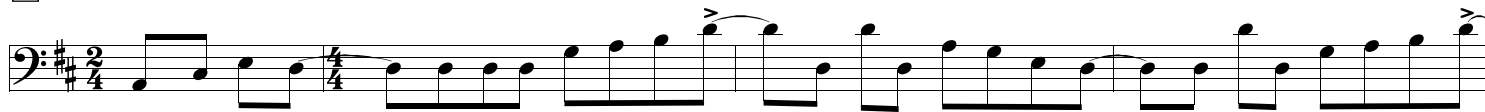
8



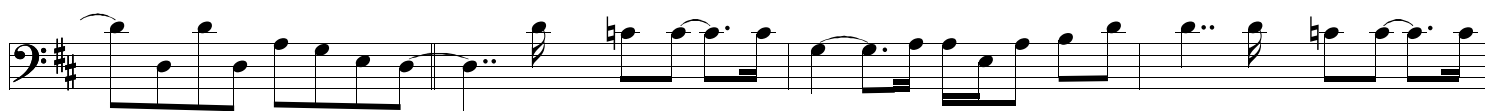
12



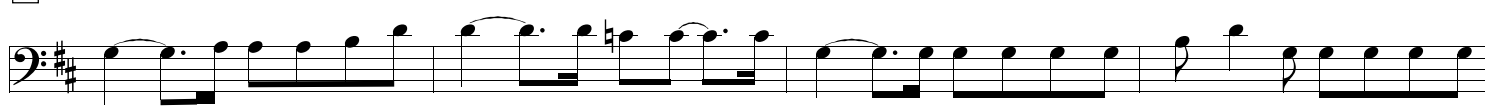
16



20



24



28



32



36



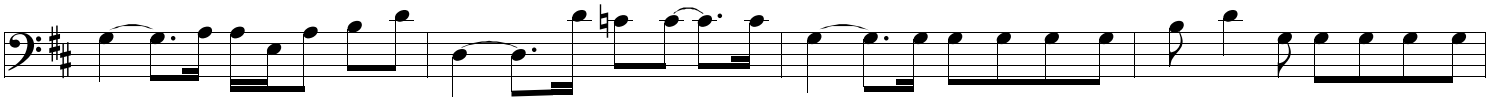
40



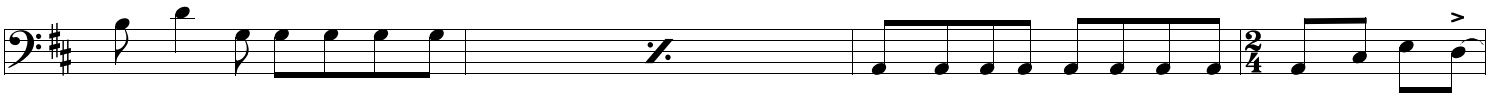
44



48



52



56



60

