

AFTER THE LOVE HAS GONE

© 1975 EMI BLACKWOOD MUSIC INC., IRVING MUSIC INC.,
FOSTER FREES MUSIC, GARDEN RAKE MUSIC and MUSIC SALES CORP

Words and Music by DAVID FOSTER,
JAY GRAYDON and BILL CHAMPLIN

Slowly

For a while, — to love was all — we could do; — we were young and we knew, — and our eyes —
to love each oth - er with all — we would ev - er need. — Love was strong —

_____ were a - live. — Deep in - side — we knew — our love — was true. — For a - while —
_____ for so long. — nev - er knew — that what — was wrong. — ba - by, — was - n't right. —

_____ we paid no mind — to the past, — 'til we knew love would last. — Ev - 'ry —
_____ We tried to find — what we had — sad - ness was all — we

_____ night — some - thin' right — would in - vite — us to — be - gin — the dance. —
_____ shared. — We were scared — this af - fair — would lead — our love — in - to... —

To Coda ⊕

Some - thin' hap - pened a - long — the way; — | what used to be — hap - py was sad. — |
yes - ter - day was all — we had. — |

Some - thin' hap - pened a - long — the way — and yes - ter - day was all — we had. —

Oh, Af - ter The Love — Has Gone, — how could you lead — me on — and not let me stay — a - round? —

Oh, — Af - ter The Love — Has Gone, — what used to be right — is wrong. —

D.S. al Coda

Can love that's lost — be found? — For a - while, —

CODA ⊕

Some - thin' hap - pened a - long — the way; — what used to be hap - py is sad. —

Some - thin' hap - pened a - long — the way; — what used to be was all — we had. —

Oh, Af - ter The Love — Has Gone, — how could you lead — me on — and not let me stay — a - round? —

G⁶ma⁷ A⁶m⁷ B⁶m⁷ Cm⁷ Fm⁷ B⁶m⁷ B⁶m⁷/E⁶

Oh, oh, Af - ter The Love Has Gone, what used to be right is wrong.

A⁶m⁷ A⁶m⁷/D⁶ G⁶ma⁷ A⁶m⁷ B⁶m⁷ Cm⁷ D⁶m⁷ E⁶m⁷ G⁶ma⁷ A⁶m⁷ B⁶m⁷ Repeat ad lib. and Fade

Can love that's lost be found? Oh, Oh,

ABC

© 1970 JOBETE MUSIC CO., INC.

All Rights Controlled and Administered by EMI APRIL MUSIC INC.

Words and Music by ALPHONSO MIZELL, FREDERICK PERREN,
DEKE RICHARDS and BERRY GORDY

With drive

G C G C

You went to school to learn, girl, things you nev - er, nev - er knew be - fore. like
Read - ing and writ - ing, 'rith - me - tic are the branch - es of the learn - ing tree. With

G C G C

"I" be - fore "E" ex - cept af - ter "C" and why two plus two makes four. Now, now, now,
out the roots of a love ev - 'ry day girl, your ed - u - ca - tion ain't com - plete.

G Cmaj⁷ Gmaj⁷ C G C

I'm gon - na teach you all a - bout love, dear. Sit your - self down; take a seat;
Teach - er's gon - na show you how to get an "A". Spell me you add the two,

G C G Cmaj⁷

all you got - ta do is re - peat af - ter me: A B C eat - y as
lis - ten to me ba - by, that's all you got - ta do.

G Cmaj⁷ G C G C

1 2 3 as sim - ple as Do, Re, Mi; A B C; 1 2 3; ba - by, you and me girl;

G Cmaj⁷ G Cmaj⁷ G C

A B C eat - y as 1 2 3 as sim - ple as Do, Re, Mi; A B C;

G C

1 2 3; ba - by, you and me girl. Come on, let me love you just a lit - tle bit;

G C G G C Cmaj⁷

I'm gon - na teach you how to sing it out; Com - a, com - a, come on let me show you what it's all a - bout.

Yah sit down girl I think I love you No get up girl

G C

show me what you can do. Shake it, shake it ba - by come on now

G C D.S. and Fade

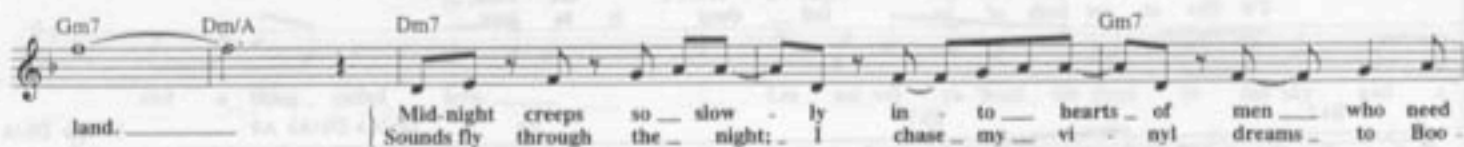
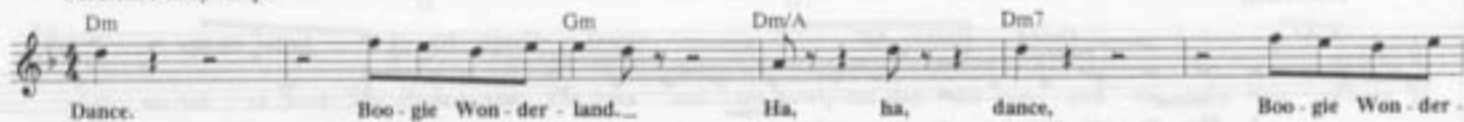
shake it, shake it ba - by. Oo, Shake it, shake it ba - by bey.

BOOGIE WONDERLAND

© 1973 EMI BLACKWOOD MUSIC INC., IRVING MUSIC INC.
and BIG MYSTIQUE MUSIC

Words and Music by JON LIND
and ALLEE WILLIS

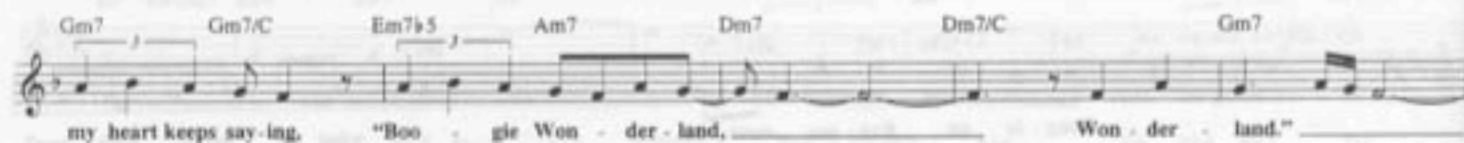
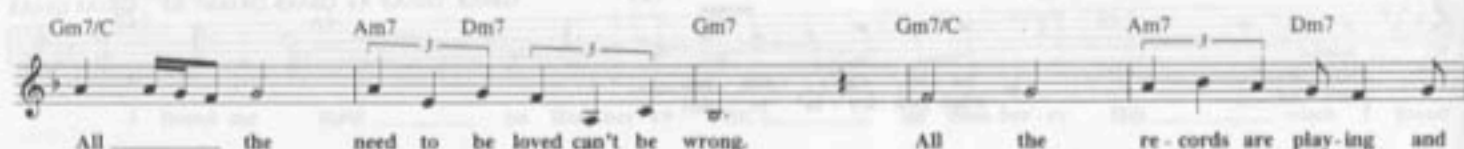
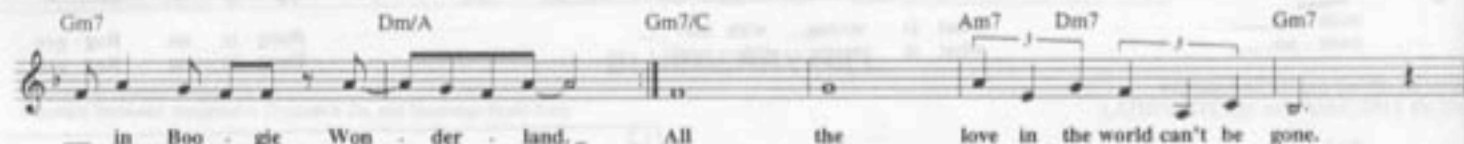
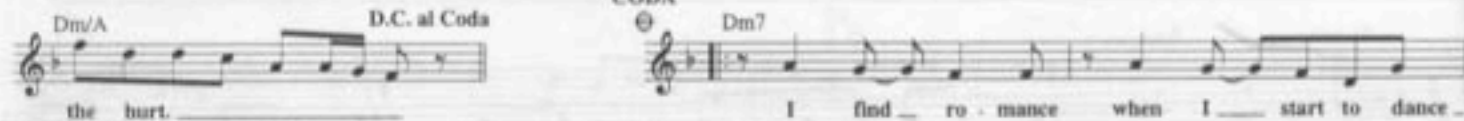
Medium Funky tempo



To Coda ⊕



CODA



LET'S GROOVE

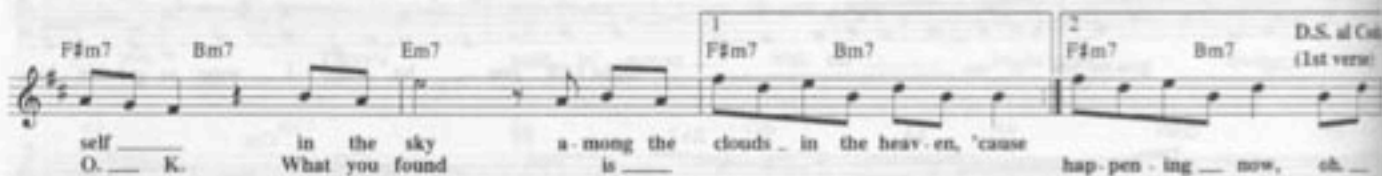
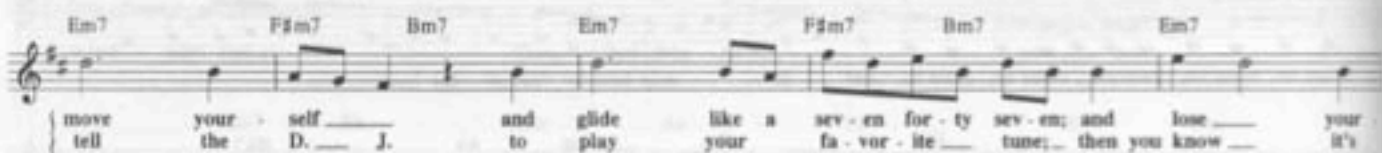
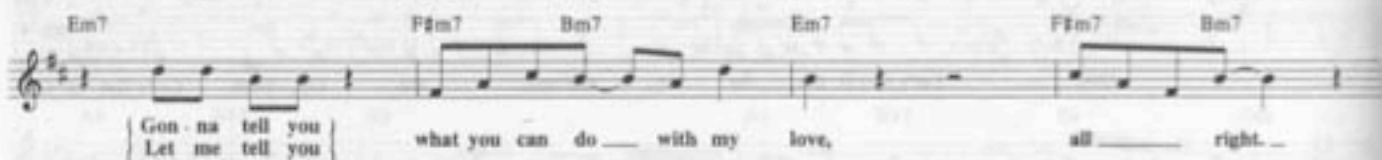
Copyright © 1981 EMI APRIL MUSIC INC. and MUSIC SALES CORPORATION (ASCAP)

Words and Music by MAURICE WHITE
and WAYNE VAUGHN

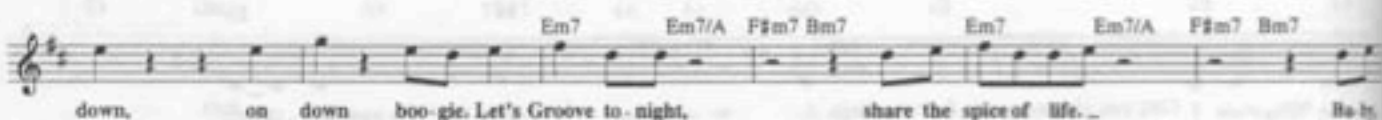
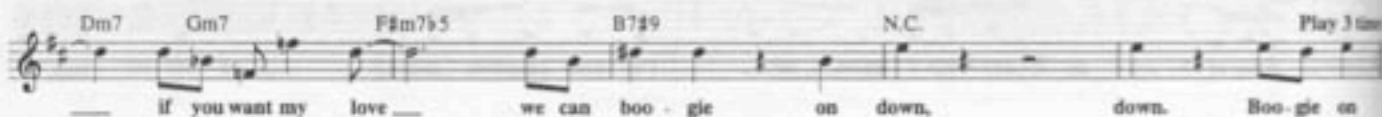
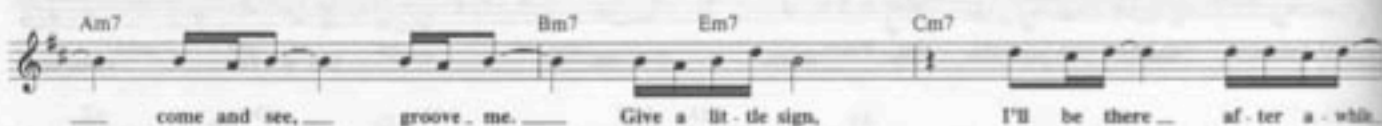
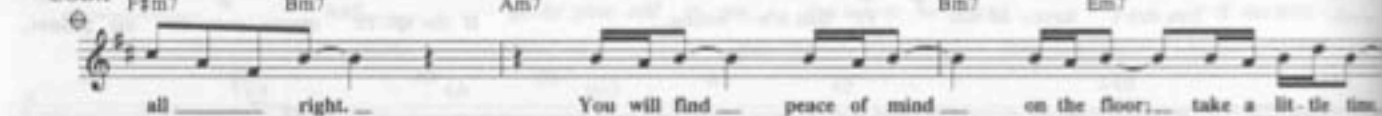
Moderately



To Coda ⊕



CODA ⊕



© 1978 EMI APRIL MUSIC INC., STEELCHEST MUSIC, EMI BLACKWOOD MUSIC INC., and IRVING MUSIC INC.
 All Rights for STEELCHEST MUSIC Controlled and Administered by EMI APRIL MUSIC INC.
 All Rights for IRVING MUSIC INC. Controlled and Administered by EMI BLACKWOOD MUSIC INC.

Words and Music by MAURICE WHITE,
 AL MCKAY and ALLEE WILLIS

Moderate Rock

1. Do you re - mem - ber
 2. ring - ing
 3., 4. (See additional lyrics)

the twent - y - first night - of Sep - tem - ber? Love was
 in the key — that our souls — were — sing - ing as we

Chords: Dmaj7, C#m7, Bm7, C#m7, F#m7, Dmaj7, C#m7, Bm7

chang - ing the mind's — pre - ten - ders while — chas - ing the clouds — a - way — Our hearts were
 danced in the night — Re - mem - ber how the stars stole the night — a - way —

Chords: C#m7, F#m7, Dmaj7, C#m7, Bm7, C#m7, F#m7, Gmaj7/A, 1, 3

Ha ha — ha — Ba - de - ya — say, do you re - mem - ber? Ba - de - ya —

Chords: Bm7, E7, C#m7, F#m7, Bm7, E7

danc - ing in Sep - tem - ber, ha - de - ya — nev - er was a cloud - y day —

Chords: C#m7, F#m7, Bm7, E7, C#m7, F#m7, Gmaj7/A, To Coda

Ba do oo ba do oo ha do oo ha do oo ha do oo ba do oo ha do oo ba do oo ha do oo ba do oo

Chords: Dmaj7, C#m7, Bm7, C#m7, F#m7, Dmaj7, C#m7, Bm7, C#m7, F#m7, Dmaj7, C#m7, Bm7

ba do ba — do oo — My thoughts are

Chords: C#m7, F#m7, Gmaj7/A, D.S. al Coda

CODA
 Ba - de - ya — say, do you re - mem - ber?

Chords: Bm7, E7, C#m7, F#m7

Ba - de - ya — danc - ing in Sep - tem - ber, ha - de - ya — nev - er was a cloud - y day —
 gold - en dreams were shin - y days —

Chords: Bm7, E7, C#m7, F#m7, Bm7, E7, C#m7, F#m7, Gmaj7/A, Repeat and Fade

Additional Lyrics

3. My thoughts are with you,
 holding hands with your heart,
 to see you, only blue talk and love.
 Remember how we knew love was here to stay?

4. Now December found the love that we shared,
 September, only blue talk and love.
 Remember the true love we share today.

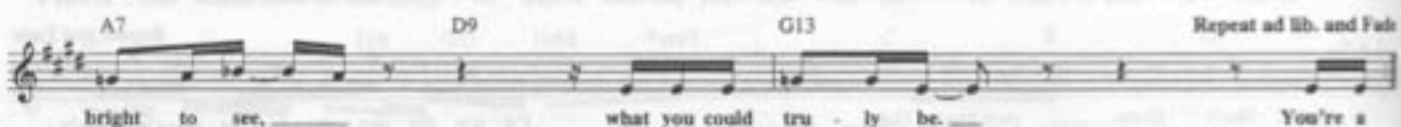
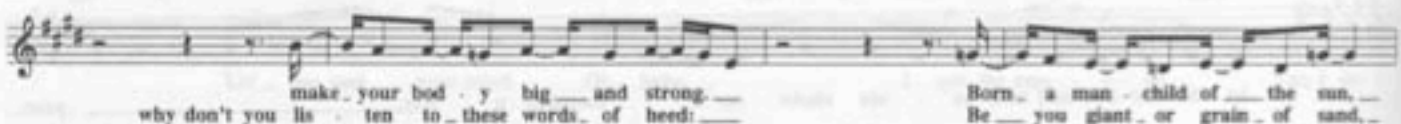
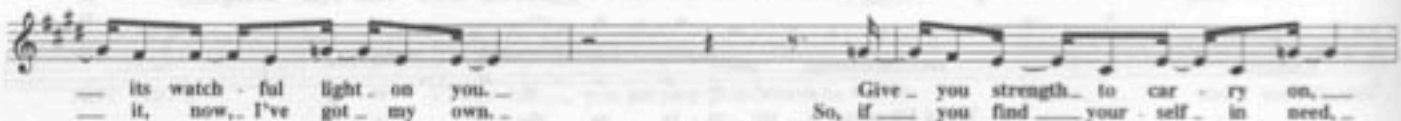
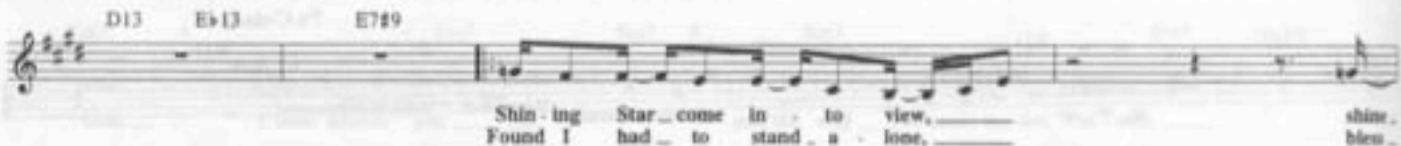
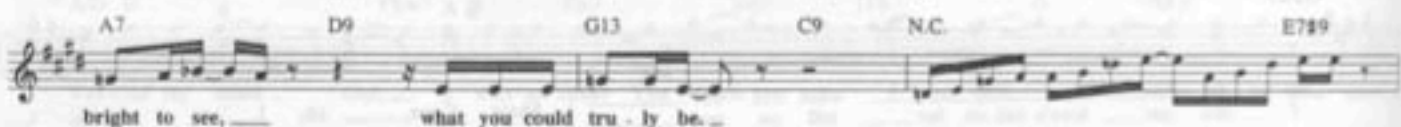
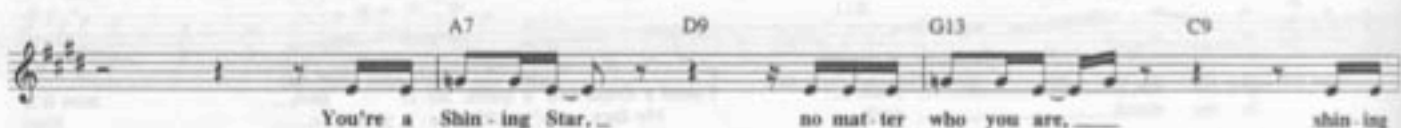
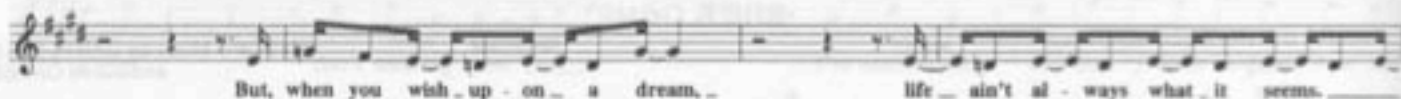
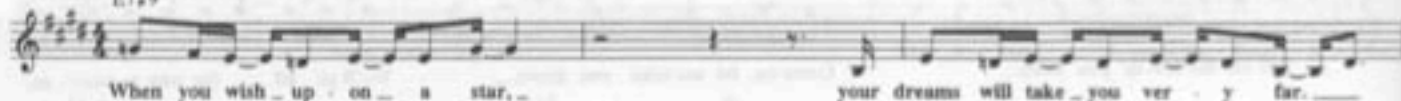
SHINING STAR

© 1975 EMI APRIL MUSIC INC.

Words and Music by MAURICE WHITE,
PHILIP BAILEY and LARRY DUNN

Slowly and strong

E7#9



Repeat ad lib. and Fade

SING A SONG

281

© 1975 EMI APRIL MUSIC INC.

Words and Music by MAURICE WHITE
and AL MCKAY

Moderately, with a strong beat

A Dmaj7 A Dmaj7

When you feel down — and out, — Sing A Song, — it - 'll make your day. —
Bring your heart to be - liev - ing, Sing A Song, — it - 'll make your day. —

A Dmaj7 A Dmaj7

You, here's a time — to shout, — Sing A Song, — it - 'll make a way. —
Life ain't a - bout — no re - triev - ing, Sing A Song, — it - 'll make a way. —

A Dmaj7 A Dmaj7

Sometimes it's hard — to care, — Sing A Song — it - 'll make your day. — A
Give your-self what you need, — Sing A Song — it - 'll make your day. —

A Dmaj7 A Dmaj7

smile — so hard — to bear, — Sing A Song, — it - 'll make a way. —
Smile, smile smile and be - lieve, — Sing A Song, — it - 'll make a way. — Sing A Song. —

S A Dmaj7 A Dmaj7

Sing A Song. — Sing A Song. —

A Dmaj7 A Dmaj7

Sing A Song. — Sing A Song. —

A Dmaj7 A Dmaj7 A

Dmaj7 1 A Am7/D 2 A Dmaj7 D.S. al Coda

Sing A Song. —

CODA

⊕ D9

You can Sing A Song a day, — you will make a bet - ter way, —

A

yeah, — yeah, — yeah, — yeah, — yeah, yeah, yeah, yeah

Dmaj7 A Dmaj7 Repeat and Fade

THAT'S THE WAY OF THE WORLD

303

© 1975 EMI APRIL MUSIC INC. and EIBUR MUSIC
All Rights Controlled and Administered by EMI APRIL MUSIC INC.

Words and Music by MAURICE WHITE,
CHARLES STEPNEY and VERDINE WHITE

Moderately

Hearts of fire _____ cre-ate love de-sire _____ take you high and high - er _____ to the

world _____ you be-long _____ Hearts of fire _____ cre-ate _____ love _____ de-sire _____

high and high - er _____ to your place _____ on the throne. _____ We come to-geth - er on _____ this spe-cial

day, _____ sing our mes-sage loud and clear... _____ Looking back, we've touched _____ on sor-

-row-ful days, _____ fu-ture pass, they dis-ap-pear... _____ You will find _____ peace of mind, _____

_____ if you look _____ way down _____ in your heart and soul. _____ Don't hes-i-tate _____ 'cause the world _____

_____ seems cold. _____ Stay _____ young at heart, _____ 'cause you're nev-er, _____ nev-er old. _____

That's The Way _____ Of The World, _____ plant your flow-er _____ and you grow _____

_____ a pearl. _____ Child is born _____ with a heart of gold; _____ way _____

of the world, _____ makes his heart _____ so _____ cold. _____ Hearts of fire _____ cre-ate _____

love de-sire _____ take you high and high - er _____ to the world _____ you be-long. _____

Repeat and Fade