



Bernard Dewagtere

Arranger, Composer, Director, Teacher

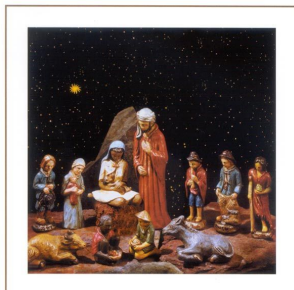
France, Erchin(59)

About the artist

Doctor of musicology, conductor and composer, I manage ACCELERANDO, vocational musical school (visit the website)

Personal web: <http://www.formationmusicale.fr>

About the piece



Title:	Minuit, chrétiens [Cantique de Noël]
Composer:	Adam, Adolphe Charles
Arranger:	Dewagtere, Bernard
Licence:	Copyright © Dewagtere, Bernard
Instrumentation:	Cello, piano or organ
Style:	Christmas, Carols
Comment:	"O Holy Night" ("Cantique de Noël") is a well-known Christmas carol composed by Adolphe Adam in 1847 to the French poem "Minuit, chrétiens" (Midnight, Christians) by Placide Cappeau (1808–1877), a wine merchant and poet, who had been asked by a parish priest to write a Christmas poem.[1] Unitarian minister John Sullivan Dwight,[2] editor of Dwight's Journal of Music, created a singing edition based o... (more online)

Bernard Dewagtere on [free-scores.com](http://www.free-scores.com)

<http://www.free-scores.com/Download-PDF-Sheet-Music-bernard-dewagtere.htm>

- Donate / Financial compensation
- Download other works by this artist
- Listen to his pieces
- Contact the artist
- Write feedback comments
- Share your mp3 recording of this piece

Minuit, chrétiens - O Holy Night

Cantique de Noël

Adolphe Adam (1847)

Arr. : Bernard Dewagtere

Cello

Piano

Measures 1-3 of the score. The Cello part is in the bass clef with a key signature of two sharps (D major) and a 12/8 time signature. It begins with a whole rest, followed by a melodic line starting on a dotted quarter note. The Piano part consists of two staves: the right hand plays a rhythmic accompaniment of eighth notes, and the left hand plays a bass line with dotted quarter notes and eighth notes.

4

Pno

Measures 4-6 of the score. The Cello part continues its melodic line with a slur over measures 4 and 5. The Piano part continues with the same rhythmic accompaniment. Measure numbers 4, 5, and 6 are indicated at the beginning of their respective measures.

7

Pno

Measures 7-9 of the score. The Cello part continues with a slur over measures 7 and 8. The Piano part continues with the same rhythmic accompaniment. Measure numbers 7, 8, and 9 are indicated at the beginning of their respective measures.

2/10

Piano score for measures 10-12. The system includes a vocal line in the upper staff and a piano accompaniment in the lower staff. The key signature is one sharp (F#) and the time signature is 2/4. The piano part features a steady eighth-note accompaniment in the right hand and a bass line with dotted half notes in the left hand. Measure numbers 10, 11, and 12 are indicated at the start of their respective staves.

13

Piano score for measures 13-15. The system includes a vocal line in the upper staff and a piano accompaniment in the lower staff. The piano part features a steady eighth-note accompaniment in the right hand and a bass line with dotted half notes in the left hand. Measure numbers 13, 14, and 15 are indicated at the start of their respective staves. The piano part includes some complex chords and doublets in the right hand.

16

Piano score for measures 16-18. The system includes a vocal line in the upper staff and a piano accompaniment in the lower staff. The piano part features a steady eighth-note accompaniment in the right hand and a bass line with dotted half notes in the left hand. Measure numbers 16, 17, and 18 are indicated at the start of their respective staves. The piano part includes some complex chords and doublets in the right hand.

19 3

Piano score for measures 19-22. The upper staff (bass clef) features a melodic line with a long slur over measures 19-22. The lower staff (treble and bass clefs) provides harmonic accompaniment with chords and a rhythmic bass line.

23

Piano score for measures 23-26. Measure 23 includes a first ending bracket labeled '1.'. The upper staff (bass clef) continues the melodic line with a slur. The lower staff (treble and bass clefs) continues the accompaniment.

27 *rit.*

Piano score for measures 27-30. Measure 27 includes a 'rit.' (ritardando) marking. The upper staff (bass clef) features a melodic line with a slur. The lower staff (treble and bass clefs) continues the accompaniment, ending with a final chord in measure 30.