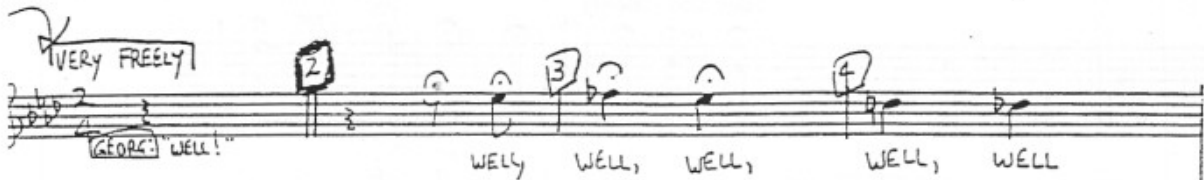
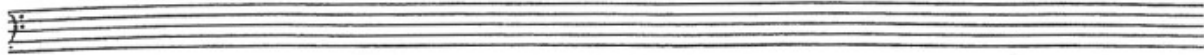
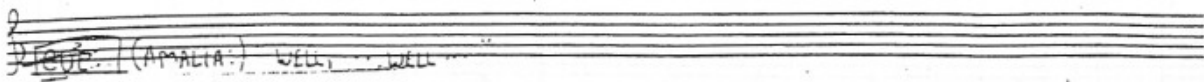
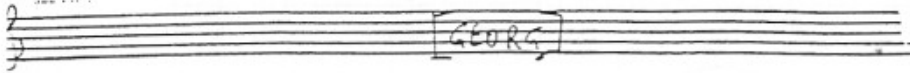


SHE LOVES ME



11 **A PIACERE** **12** **13**

I DID-N'T LIKE HER. DID-N'T LIKE HER? I COULDN'T STAND HER. COULDN'T STAND HER? I WOULDN'T

14 **15** **16** **TEMPO** **17** **18** **19**

HAVE HER. I NEVER KNEW HER BUT NOW I DO AND I COULD AND I WOULD AND I KNOW.

20 **MOD. BRITTE** **21** **22** **23**

SHE

FLA
CELLO
BASS
TRMP

W.W. FACC.

f

f

mp

f

ff

ff

ff

ff

RALL.

8VA

(FADE)

f

mp

25 26 27 28 29

LOVES ME. AND TO MY A-MAZE-MENT I LOVE IT KNOWING THAT SHE

31 32 33 34 35

LOVES ME. SHE LOVES ME. TRUE, SHE DOESN'T SHOW IT. HOW

37 38 39

COULD SHE WHEN SHE DOES-N'T KNOW IT. YES-TER-DAY SHE

41 42 43

LOATHED ME. BAH! NOW TO-DAY SHE LIKES ME. HAH! AND TO-MOR-ROW

41 45 46 47 48 49

To - MOR-row AH! ny

(+8va)
CRES.

CRES.

50 51 52 53 54 55

TÉEHE ACHÉ. FROM THE URGE TO TOUCH HER. I'M SPEECH-LESS FOR I MUST-N'T

W.W., HNS

STRS, ACC. VNS, VLA E LOCO

56 57 58 59 60 61

TELL HER. IT'S WRONG NOW. BUT IT WON'T BE LONG NOW. BE -

STRS

VNS, VLA

W.W., HNS

W.W.

HNS

Tutti fz

WHATE KEYS GUSS

91 92 93

MAT-TERS ARE Im-PROU-ING DAIL-Y. YES-TER-DAY I

94 95 96 97

LOATHED HER. BAH! NOW TO-DAY I LOVE HER. HAH! AND TO-MOR-ROW

(FADE) fl

99 100 101 102 103

TO - MOR-ROW — AH! I'm

VCNS

WHITE KEY GLASS.

116 117 118 119 120 121

STILL I'M IN-CAN-DES-CENT AND LIKE SOME AD-O-LES-CENT, I'D LIKE TO SCRAWL ON EV-'RY WALL I

122 123 124 125 126 127

SEE. SHE LOVES ME SHE LOVES

128 129 130 131 132

ME!

AL BOSS, PHILADELPHIA, PENNA.